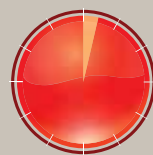


2 minute tru-facts



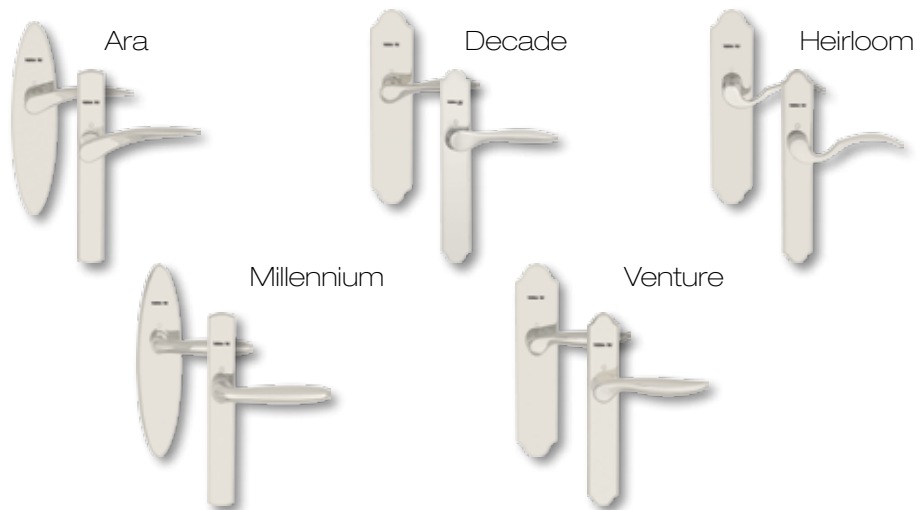
Lock engages the frame at three points, enhancing security and performance



1" deadbolt

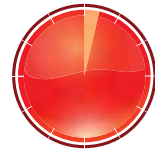
Interior view of door

Multi-Point Locking System Handleset Hardware



Images shown in polished chrome

2 minute tru-facts



LIMITED
LIFETIME
WARRANTY

Tru-Advantages

- Enhances security and stability for entry and patio door systems, which helps increase customer satisfaction and decrease call backs
 - Stronger than traditional deadbolt assemblies – system engages the frame at three points rather than only at the strike plate
 - Helps keep the door seated squarely in the frame, providing improved alignment and weather sealing even if the house settles
 - Tested and approved for use with all Therma-Tru® 6'8" fiberglass and 8'0" glazed fiberglass Impact-rated doors⁽¹⁾, for increased protection in coastal regions
 - Mishandling device keeps locks from accidentally engaging and causing damage to the door and frame
- Rust-resistant stainless steel and self-lubricating locks deliver long-lasting performance
- Tru-Defense® Door System Rider eligible⁽²⁾; Availability of increased warranty protection provides peace-of-mind for homeowners

Product Highlights

- For use with Classic-Craft®, Fiber-Classic® and Smooth-Star® entry and patio systems
- Offered for any size fiberglass door and highly recommended for 8'0" and double-doors
- Manual tongue locks for single door applications – engages the jamb and mullion
 - Available for door sizes 6'6", 6'8", 7'0", or 8'0"
- Manual shootbolt locks for French door applications – engages the head and sill
 - Available for door sizes 6'6", 6'8", 7'0", or 8'0"
- Handlesets and strike plate finish options include:
 - Antique brass, antique nickel, black nickel, brass, brushed nickel, polished chrome and oil-rubbed bronze finish (Note: narrow handleset available in white)
- Backed by Therma-Tru Limited Lifetime Warranty⁽³⁾; Tru-Defense® Door System Rider eligible when properly installed with required Tru-Defense® door system components

(1) Doors tested to ASTM E1886/E1996 or Miami Dade TAS 201/203; (2) The Rider does not warrant workmanship of the builder, remodeler, distributor, dealer or other person that assembles or installs the Tru-Defense® door system, nor any damages caused by improper handling, assembly or installation; (3) For complete details on our warranty, visit www.thermatru.com.